

Instruction Sheet

Follow these instructions to install a rear dispose kit in the RE80 fryers.

Subject: 8263807 RE80 Rear Oil Dispose Kit Instructions

Models affected: FPRE80 Fryers

In This Kit

Part #	Description	Qty
1087455	HANDLE, FQ1814G BULK WASTE	1
130000871	PLUMBING ASSY, REAR DISPOSE FQE	1
1064182	HARNES, OIL RETURN JUMPER 28" W/ 3/16"	1
8090412	SCREW, #10-1/2	6
8090417	NUT, FLNG 1/4-20 SERR	4
8090237	4-40 KEPS	4
8090131	BOLT, 1/4-20 X 3/4 HX	4
1089575	HARNES ASSY, OIL RTN JUMPER FPRE80	1
8158000	LOCTITE 567 TUBE 6ML	1
8101668	ADAPTER, MALE 5/8" O.D. X 1/2"	1
8198045	RE80 REAR DISPOSE INSTRUCTIONS	1

- Disconnect power from the electrical power supply.
- Remove the fryer from the hood to gain access to the rear of the fryer.
- Remove filter pan.
- Remove filter pan lid.
- Remove the upper back from the fryer to ease assembly.
- Ensure all dispose assembly hoses and fittings are tight before inserting assembly into the fryer.
- The dispose assembly will be installed to the left of the filter motor. Check to see that the dispose assembly bracket holes match up with the holes in the filter pump motor bridge, if not, the bridge will need to be rotated 180 degrees (see Figure 1).
- Remove the plate from the bottom of the dispose assembly.
- Insert the dispose assembly into the fryer on the far-left cabinet as shown (see Figure 2).
- Line up the three (3) holes in the assembly with the holes on the filter motor bridge.
- Insert a 1/4" 20x5/8 bolt from the bottom into the assembly (see Figures 3 & 4) and attach with a nut on the top side. Insert the other two (2) bolts and attach nuts. Ensure all three bolts/nuts are securely fastened.

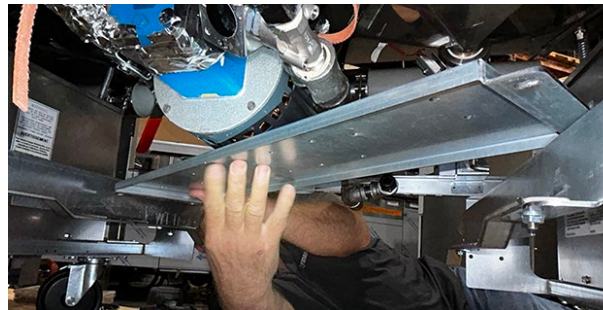


Figure 1

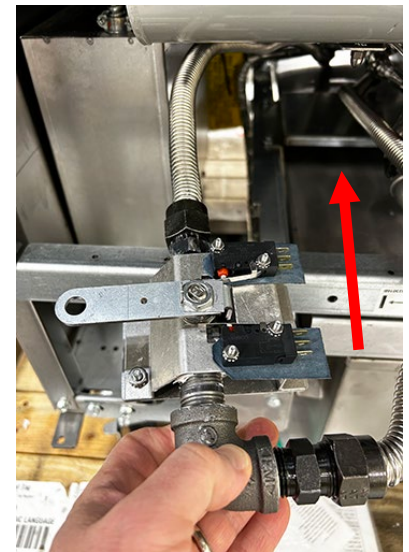


Figure 2

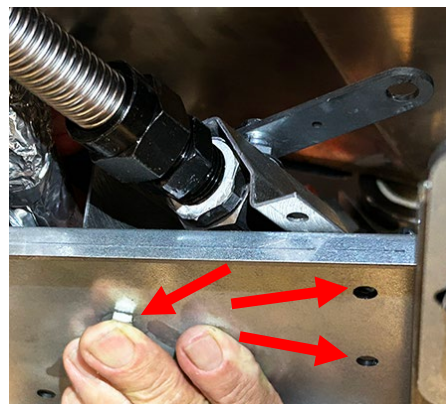


Figure 3

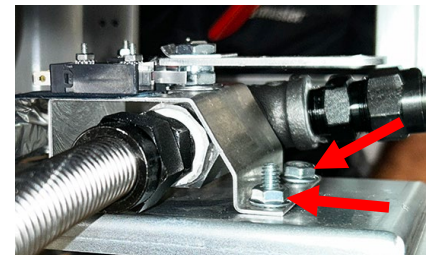


Figure 4

12. Place the clevis hook over the dispose valve assembly handle. Insert the handle assembly rod through the clevis clip, through the handle into the dispose assembly. Rotate the clip over the rod and snap into place as shown (see Figure 5).

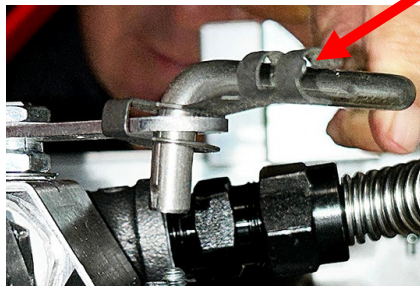


Figure 5

13. Align the front handle assembly so the rod is aligned directly parallel to the contactor box. Attach the handle assembly to the front cross brace using existing holes and secure with 8090412 5/16" cabinet screws (see Figure 6). Pull the handle completely forward away from the fryer and push back towards the fryer. Ensure the handle moves freely.

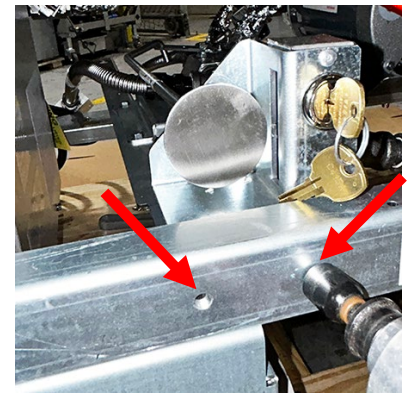


Figure 6

14. Align the waste dispose port on the rear fryer brace, mark and drill two 1/8" pilot holes to attach the rear dispose port (see Figure 7).

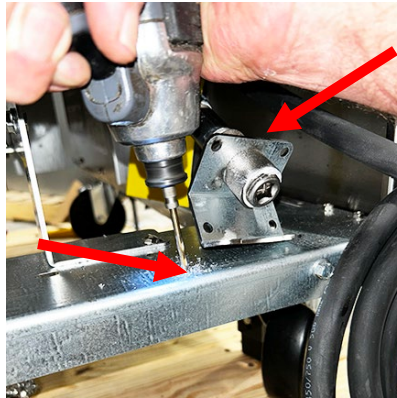


Figure 7

15. Attach with 8090412 5/16" cabinet screws (see Figure 8).

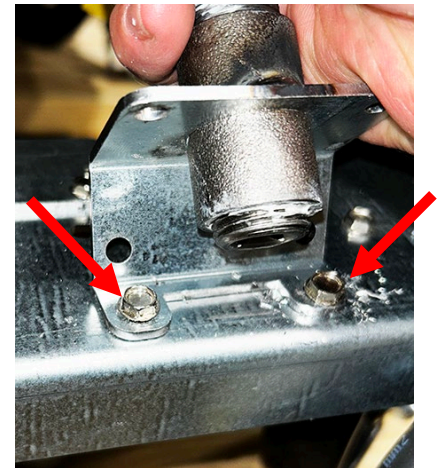


Figure 8

16. There are two plugged ports on the left side of the rear manifold as viewed from the front of the fryer. Remove the right plug using a 3/8" drive wrench (see Figure 9).



Figure 9

17. Attach the 8101668 adaptor to the open port in the oil manifold, from the previous step, using Loctite® (see Figure 10).



Figure 10

18. Attach the flexline from the dispose assembly to the fitting in the previous step (see Figure 11).

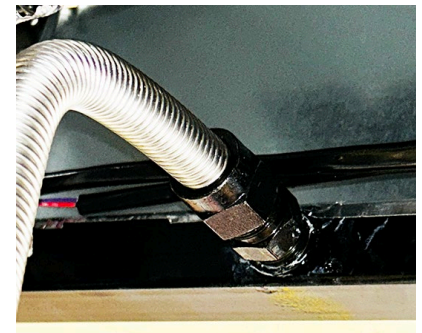


Figure 11

19. Attach the orange and blue wires from one end of the harness to the rear switch on the dispose assembly. Ensure the wires are attached to the two rear terminals on the switch as shown (see Figure 12).

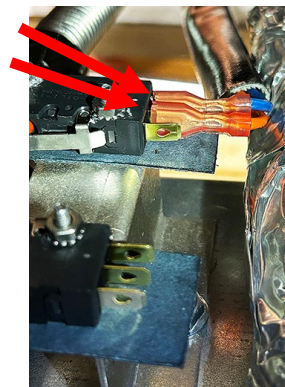


Figure 12

20. Remove the two (2) nuts attaching the return switch cover under the second (2nd) vat. The switch is located under the rear side of the vat attached to the return valve (see Figure 13).

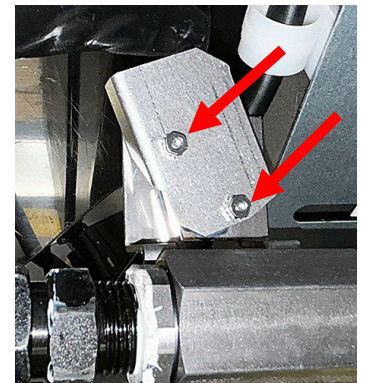


Figure 13

21. Disconnect the existing harnesses attached to the switch (see Figures 14 & 15). **DO NOT REMOVE** the unused insulated connector from the switch.
22. Remove the blue and orange wires from the switch. Attach the pigtail from the new harness from the dispose assembly to pigtail on the old harnesses (blue wires to blue wires and orange wires to orange wires) (see Figure 16).
23. Reattach the pigtails to the two (2) terminals on the switch (see Figure 17).
24. Reattach the switch cover removed in step 20.
25. Test the dispose kit by connecting the fryer to power. Pull on the dispose handle to ensure the switch activates the pump motor.
26. Reverse steps 2-5 to reassemble and return to operation.



Figure 14

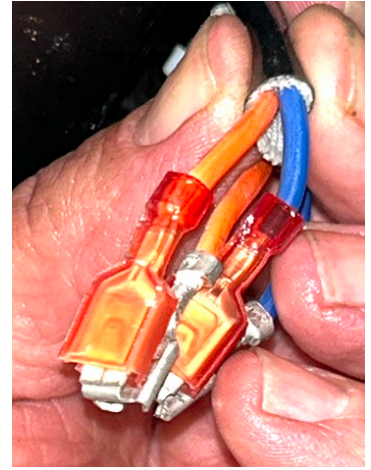


Figure 15

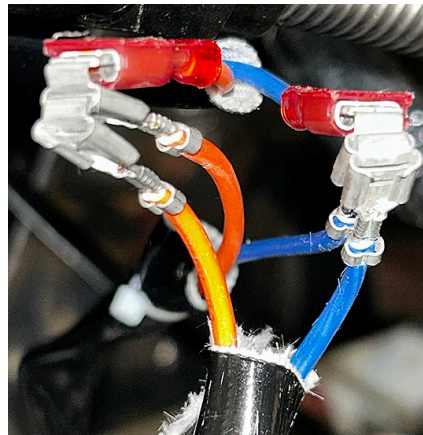


Figure 16

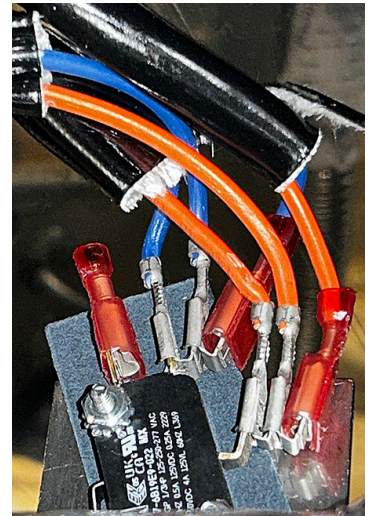


Figure 17